

Don't Let the Pigeon Drive the Sleigh!

ACTIVITY KIT!



FESTIVE
FEATHERS
& PEACEFUL
PLUMAGE!

Let's Draw The Holiday Pigeon!



1. Draw the letter *M* twice. The *Ms* connect in the middle.



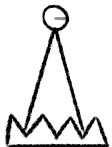
2. Draw a straight line under the two *Ms*.



3. Draw a triangle above the two *Ms*.



4. Draw the letter *O* at the tip of the triangle.



5. Draw a small line from the center of the *O* to the edge.
(You made a beak!)



6. For The Pigeon's head, draw a three-quarter circle.



7. Now, draw a smaller three-quarter circle inside the first one.



8. Place the eye next. It is most important part of the drawing, because the eye shows how the character is feeling. Make sure to darken it in.



9. Next, you have a choice between two letters—*M* or *W*—but draw the letter on its side.
(You made a beak!)



10. Now, draw two lines going straight down for the neck.



11. Almost done! Draw two lines across the neck for the collar.



12. Remember to sign your name!

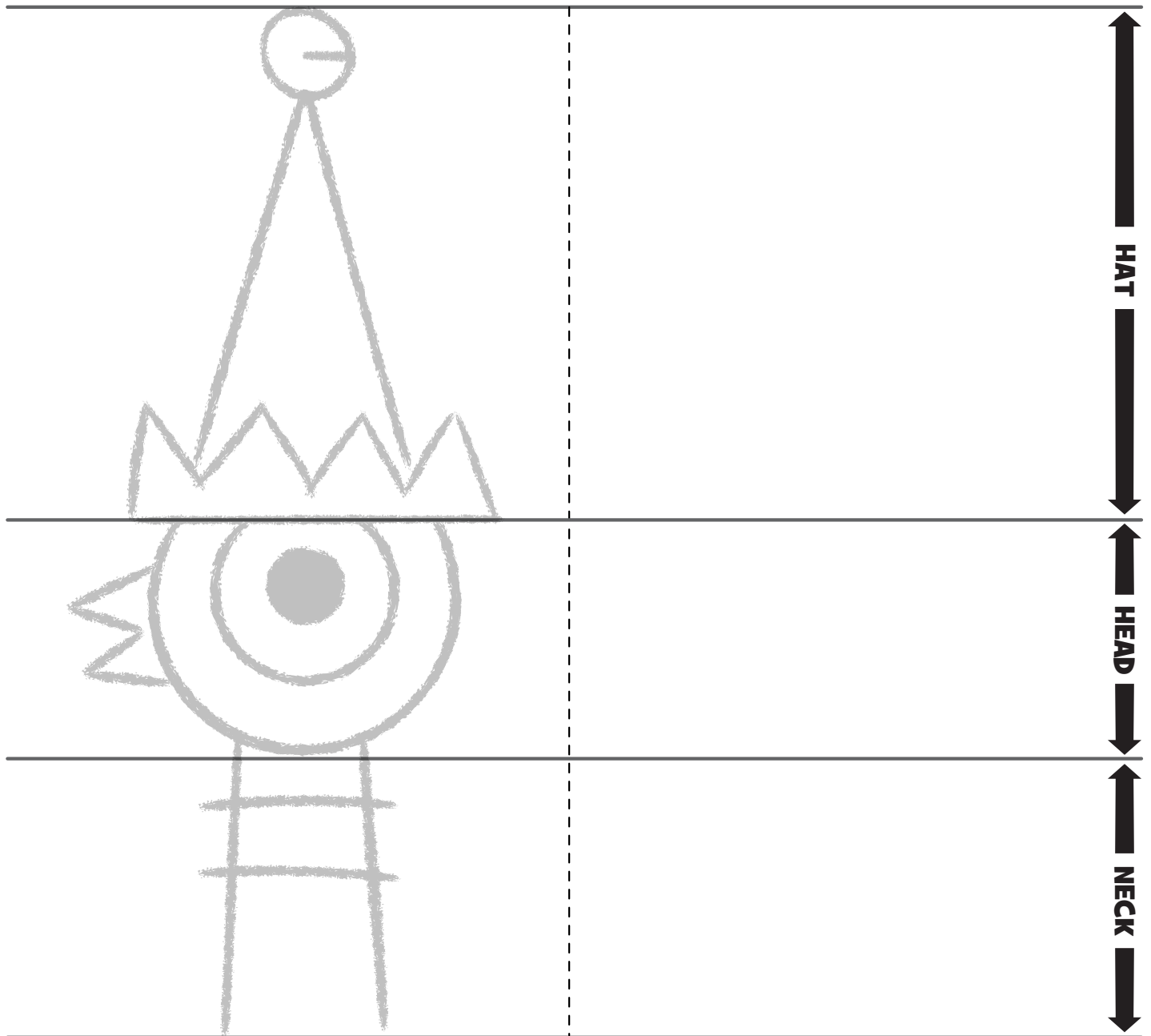
FINISHED!

Great job! That's an awesome Pigeon!

Once you've gotten the basic drawing down, mix it up. Move his hat, his eye, and his beak to create lots of different expressions and emotions!

Your Turn to Draw The Pigeon!

Use the guide to practice drawing The Pigeon.



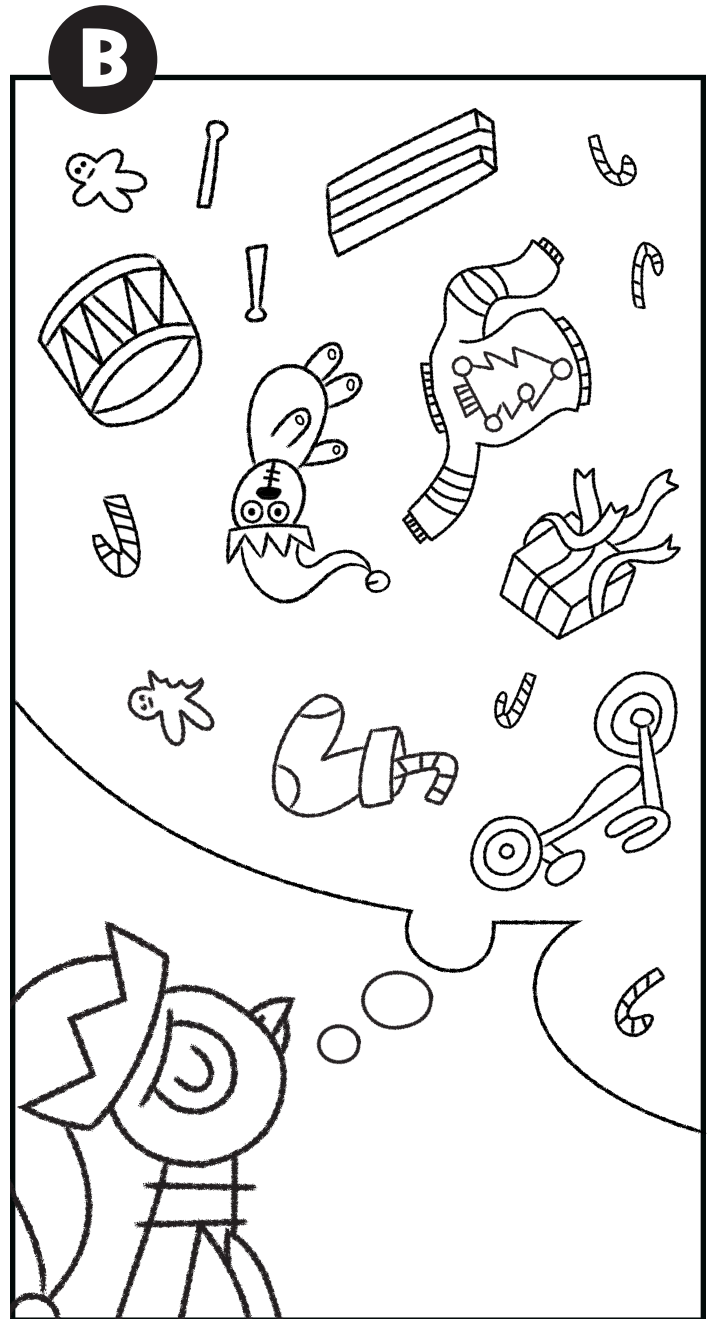
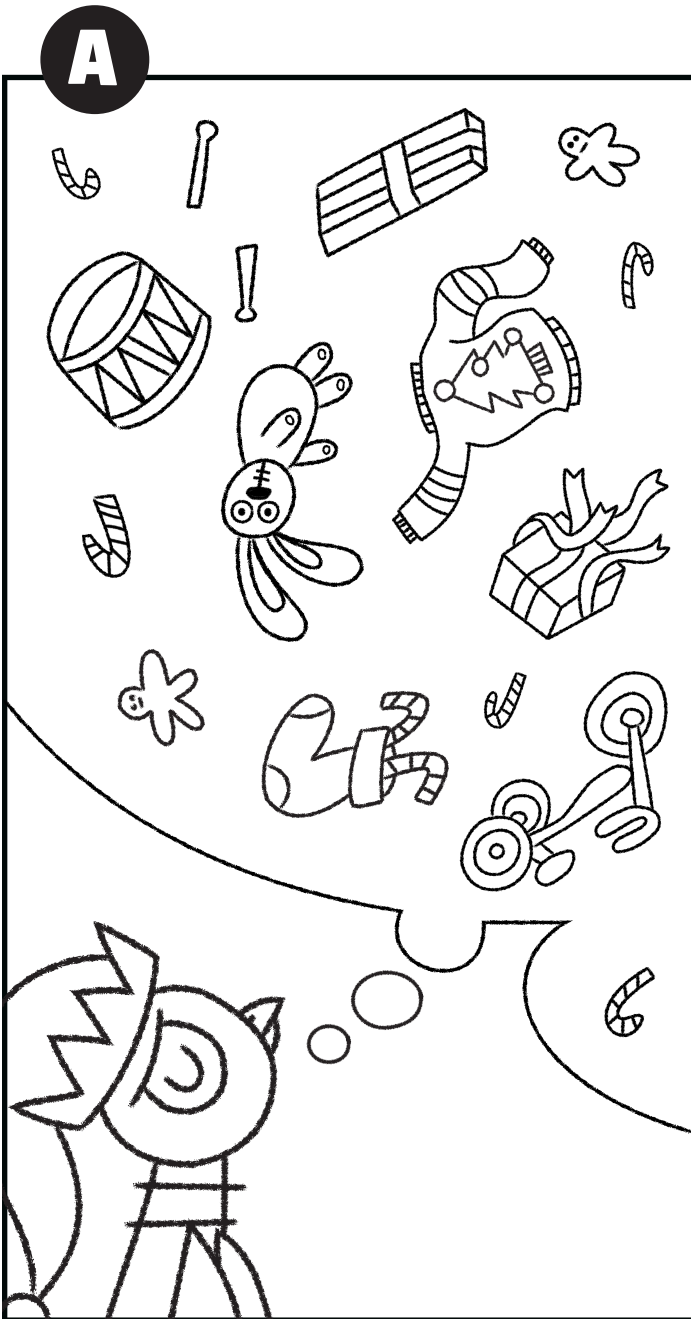
Color The Pigeon!

(Don't forget to color the snow white!)



Spot the Differences!

Pictures **A** and **B** are almost the same. Circle the 10 differences in picture **B**.



Answers: 1. The gingerbread person is in a different corner. 2. The gift has one ribbon instead of two. 3. The candy cane is in a different corner. 4. The drum is upside down. 5. The Christmas tree on the sweater is wearing The Pigeon's hat. 7. The stocking has only one candy cane. 8. Someone took a bite of the gingerbread person! 9. The tricycle is missing a wheel. 10. The crown of The Pigeon's hat has three points instead of four.

Make Your Own Tree Ornament!

Materials Needed



SCISSORS



HOLE PUNCH

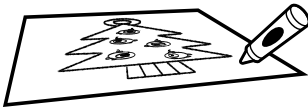


STRING OR RIBBON



CRAYONS OR MARKERS

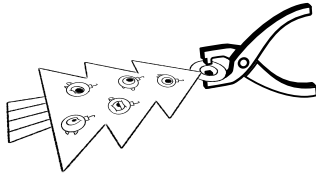
1. Decorate the ornament any way you want with crayons or markers!



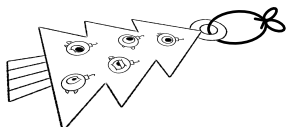
2. Carefully cut out the tree along the dotted lines. You may need to ask a grown-up for help.



3. Hole punch the top of the ornament inside the dotted lines.



4. Tie ribbon or a string through the hole to create an ornament hanger.



5. Hang your ornament!

